

5.2. Experimental Data

A.1 Strong Pitch

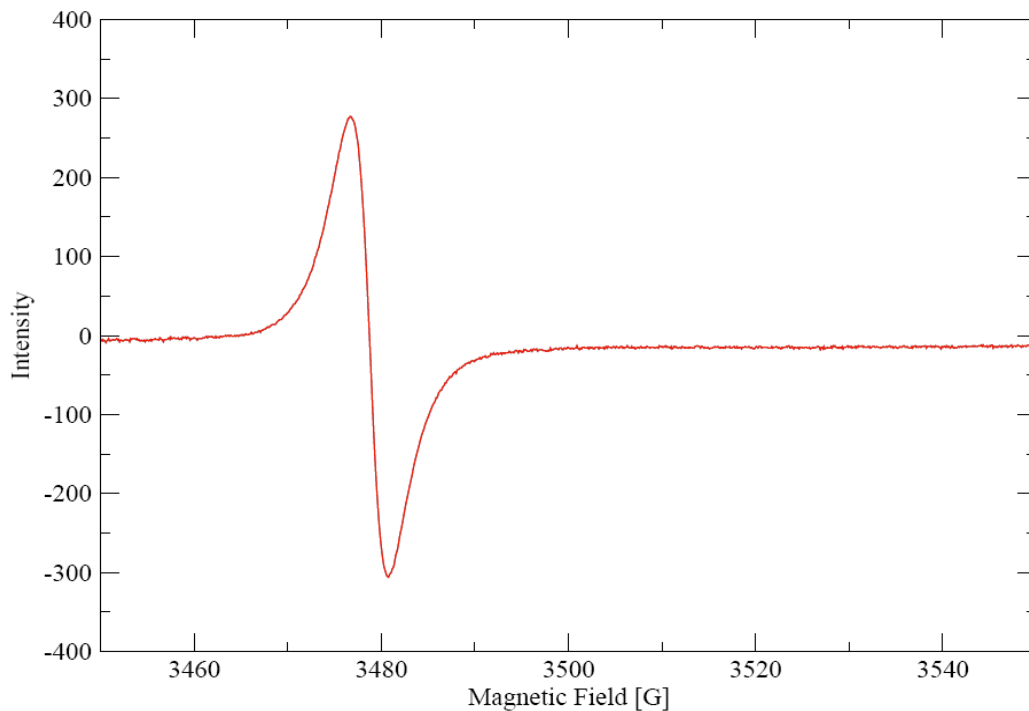


Image A.1 Strong Pitch, for Data see Tab. A.1

Microwave power:	1.008 mW	Integration time:	20.48 ms
Receiver gain:	30 dB	Conversion time:	40.96 ms
Field modulation:	1.00 G		

Tab A.1 Strong Pitch Data (02.dat)

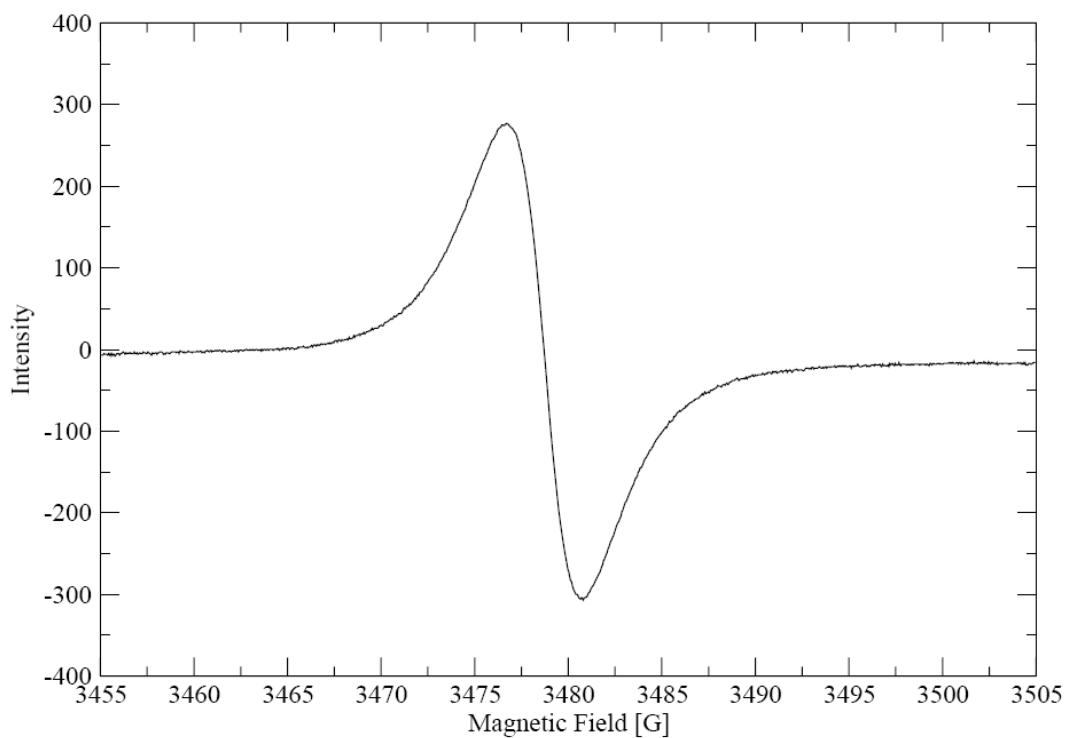


Image A.2 Strong Pitch, for Data see Tab. A.2

Microwave power:	1.008 mW	Integration time:	20.48 ms
Receiver gain:	30 dB	Conversion time:	40.96 ms
Field modulation:	1.00 G		

Tab A.2 Strong Pitch Data (03.dat)

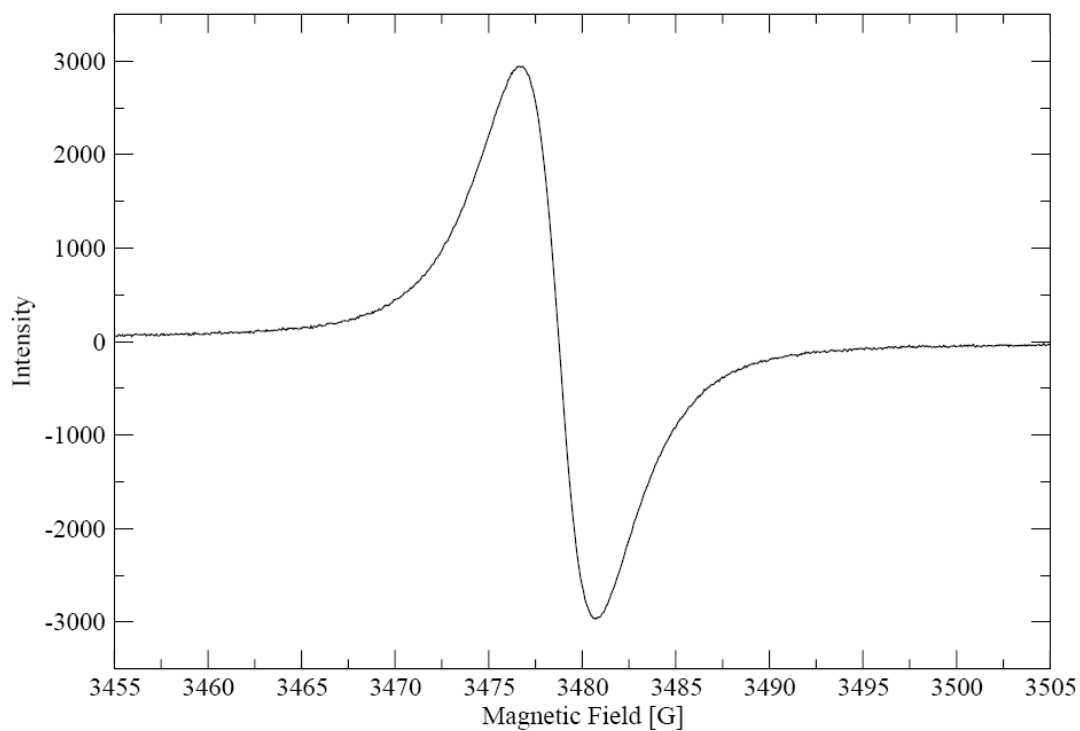


Image A.3 Strong Pitch, for Data see Tab. A.3

Microwave power:	1.008 mW	Integration time:	20.48 ms
Receiver gain:	50 dB	Conversion time:	40.96 ms
Field modulation:	1.00 G		

Tab A.3 Strong Pitch Data (04.dat)

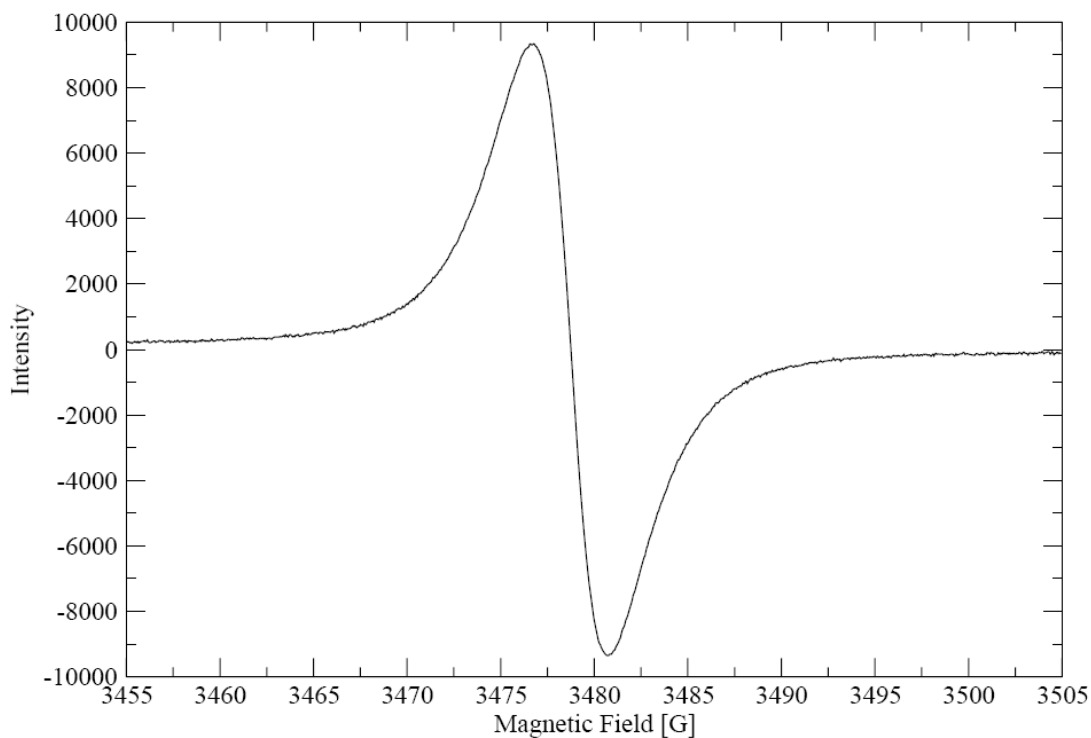


Image A.4 Strong Pitch, for Data see Tab. A.4

Microwave power:	1.008 mW	Integration time:	20.48 ms
Receiver gain:	60 dB	Conversion time:	40.96 ms
Field modulation:	1.00 G		

Tab A.4 Strong Pitch Data (05.dat)

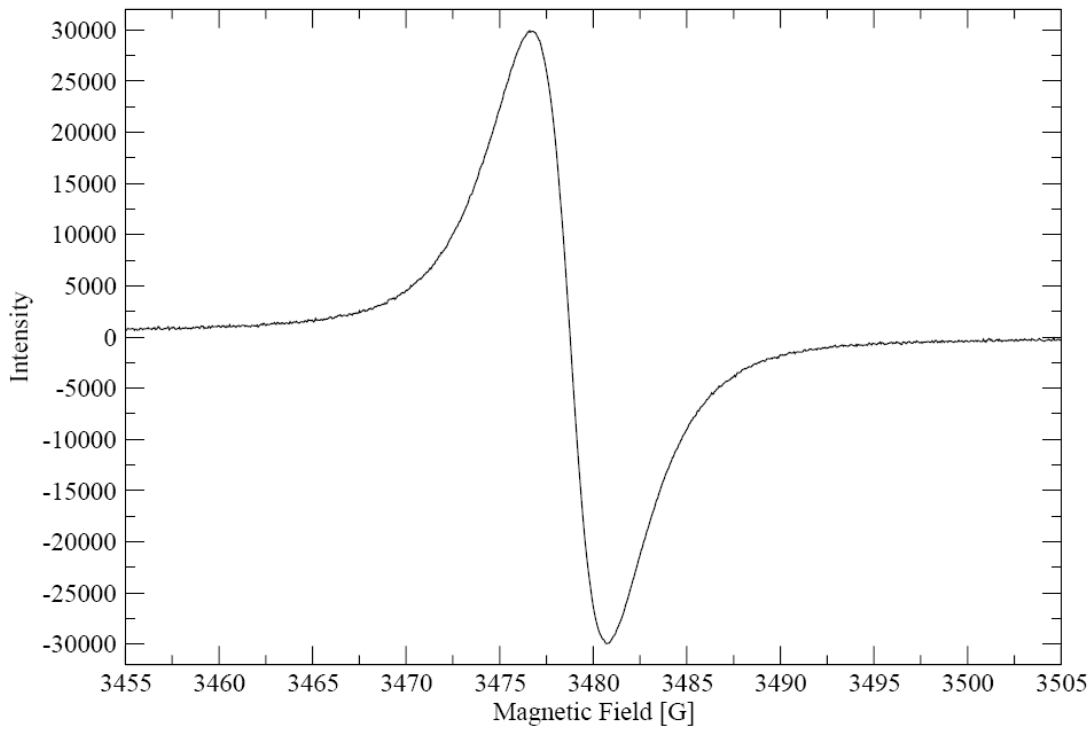


Image A.5 Strong Pitch, for Data see Tab. A.5

Microwave power:	1.008 mW	Integration time:	20.48 ms
Receiver gain:	70 dB	Conversion time:	40.96 ms
Field modulation:	1.00 G		

Tab A.5 Strong Pitch Data (06.dat)

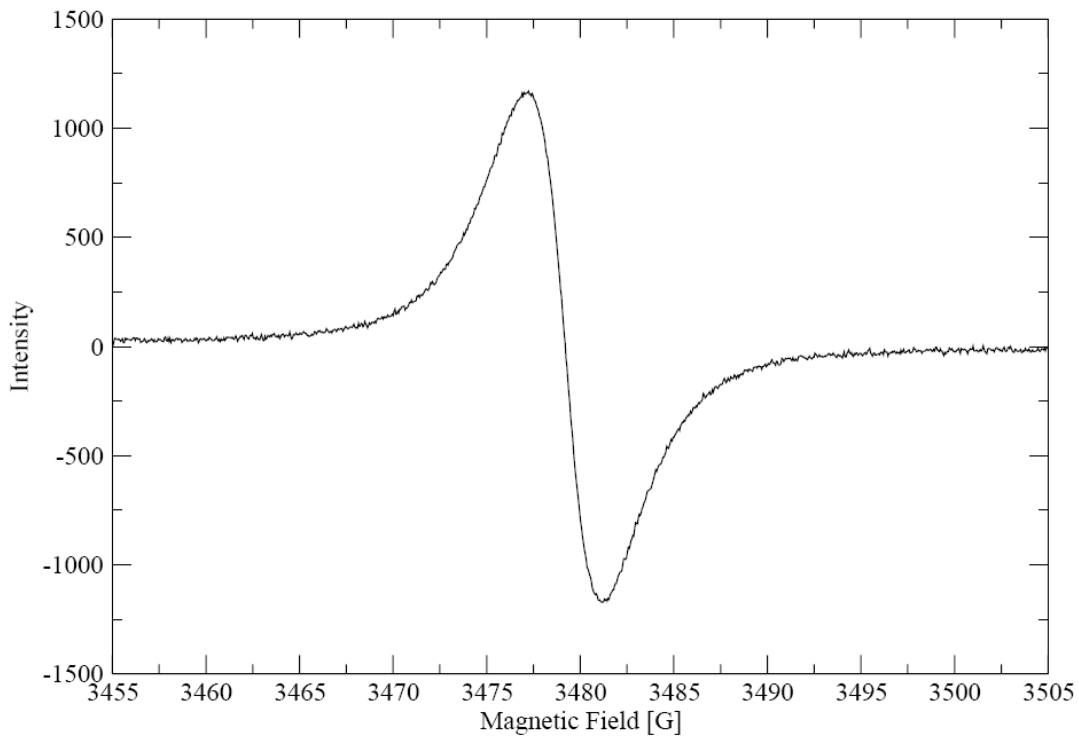


Image A.6 Strong Pitch, for Data see Tab. A.6

Microwave power:	1.008mW	Integration time:	2.56 ms
Receiver gain:	60 dB	Conversion time:	5.12 ms
Field modulation:	1.00 G		

Tab A.6 Strong Pitch Data (07.dat)

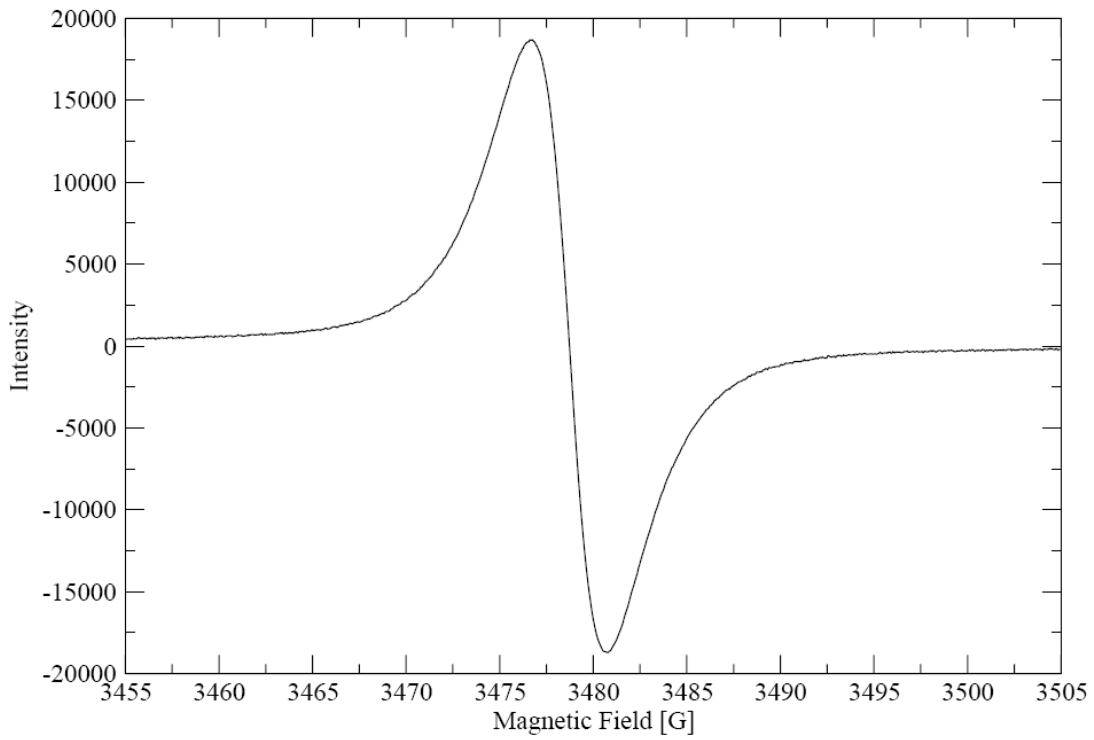


Image A.7 Strong Pitch, for Data see Tab. A.7

Microwave power:	1.008 mW	Integration time:	40.96 ms
Receiver gain:	60 dB	Conversion time:	81.92 ms
Field modulation:	1.00 G		

Tab A.7 Strong Pitch Data (08.dat)

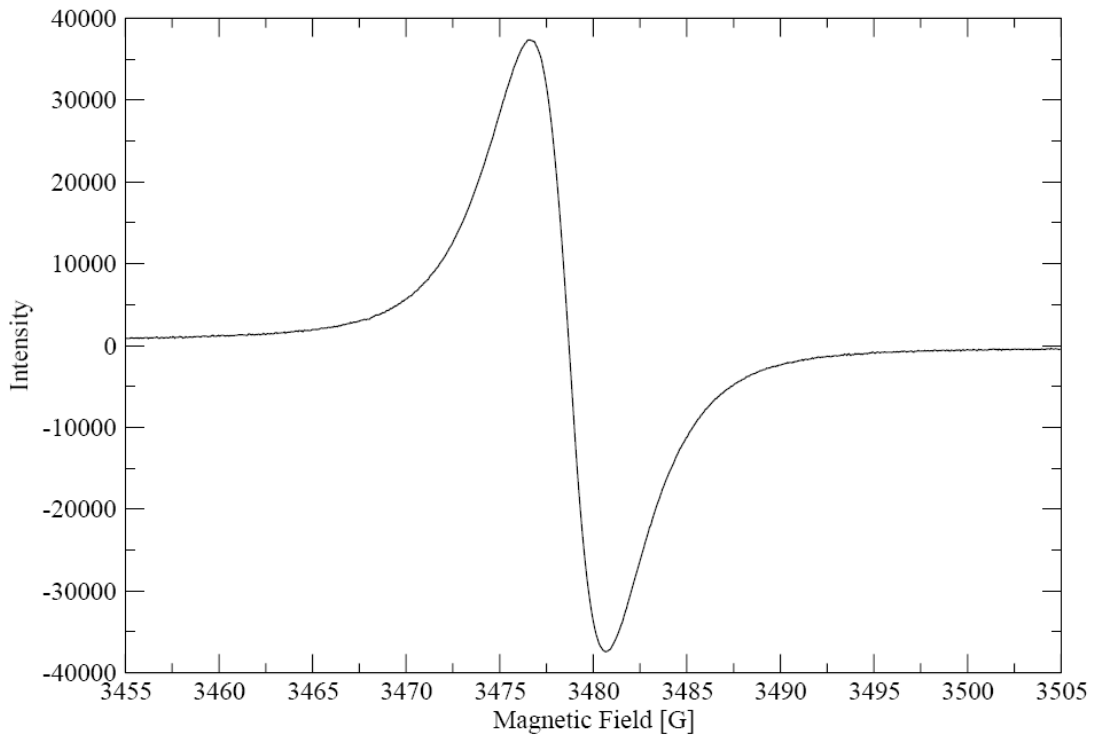


Image A.8 Strong Pitch, for Data see Tab. A.8

Microwave power:	1.008 mW	Integration time:	81.92 ms
Receiver gain:	60 dB	Conversion time:	163.84 ms
Field modulation:	1.00 G		

Tab A.8 Strong Pitch Data (09.dat)

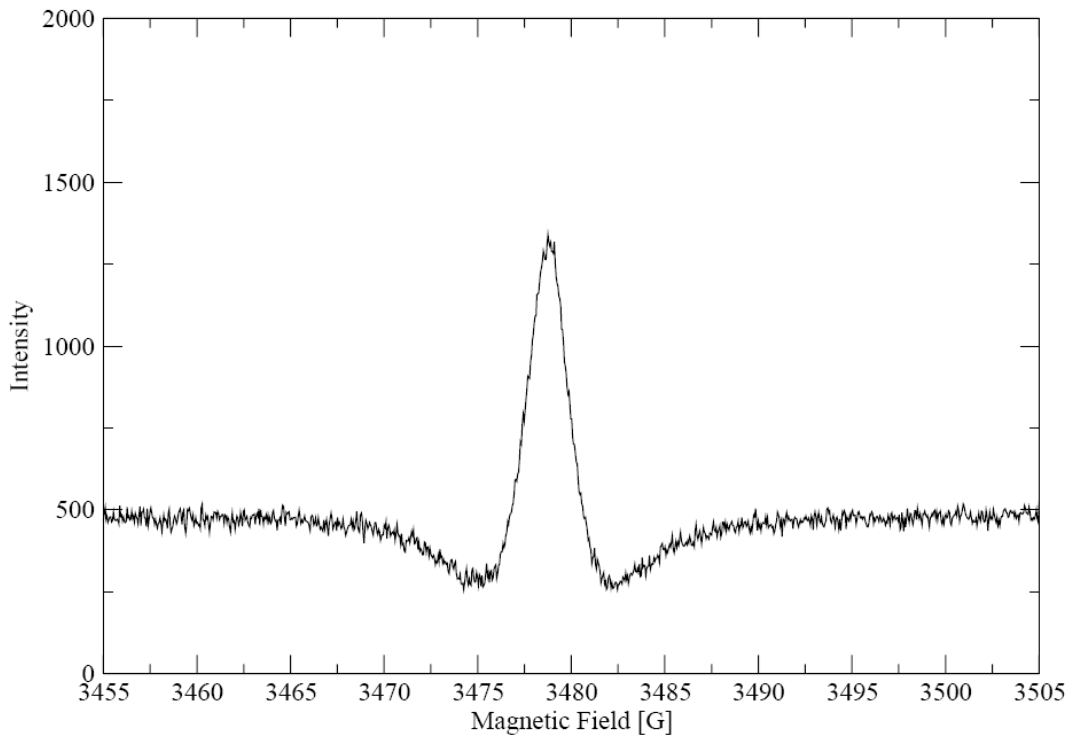


Image A.9 Strong Pitch, for Data see Tab. A.9

Microwave power:	1.008 mW	Integration time:	20.48 ms
Receiver gain:	60 dB	Conversion time:	40.96 ms
Field modulation:	1.0 G	Second harmonics	

Tab A.9 Strong Pitch Data (10.dat)

A.2 Weak Pitch

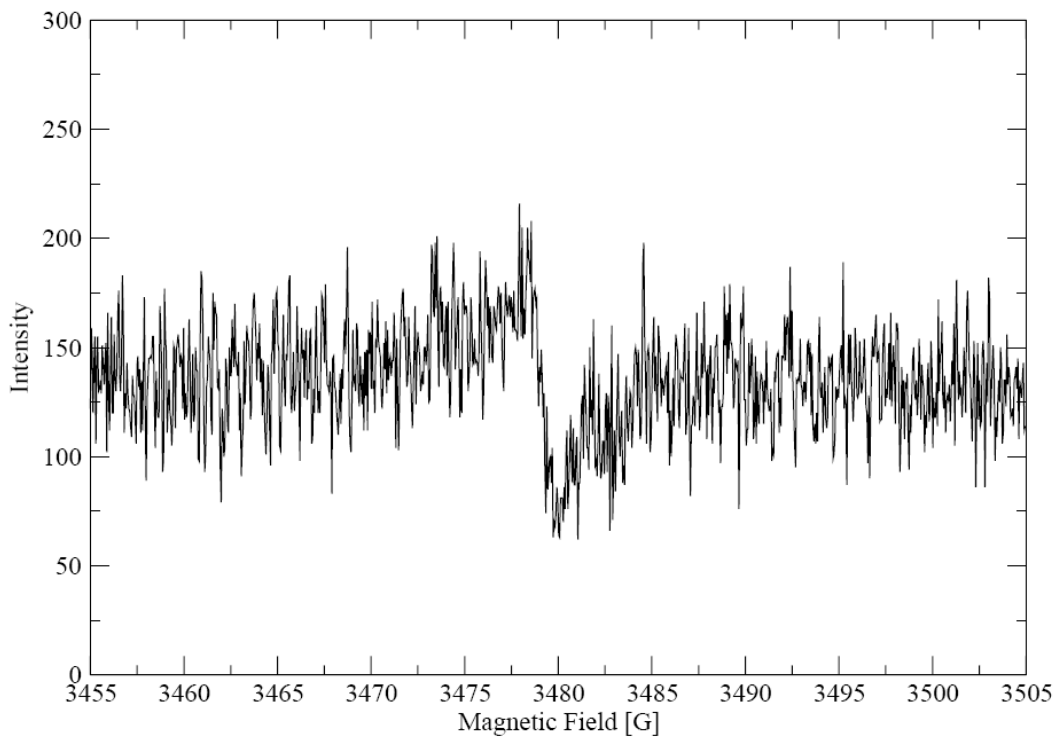


Image A.10 Weak Pitch, for Data see Tab. A.10

Microwave power:	1.008 mW	Integration time:	20.48 ms
Receiver gain:	60 dB	Conversion time:	40.96 ms
Field modulation:	1.00 G		

Tab A.10 Weak Pitch Data (21.dat)

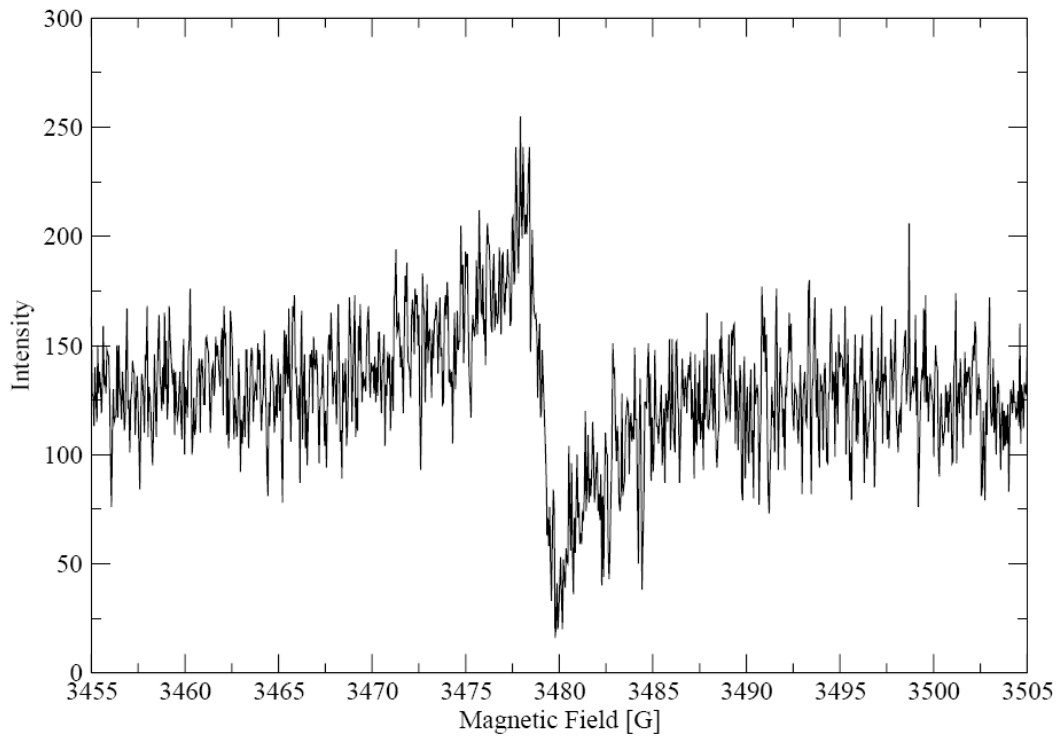


Image A.11 Weak Pitch, for Data see Tab. A.11

Microwave power:	1.008 mW	Integration time:	20.48 ms
Receiver gain:	60 dB	Conversion time:	40.96 ms
Field modulation:	2.00 G		

Tab A.11 Weak Pitch Data (22.dat)

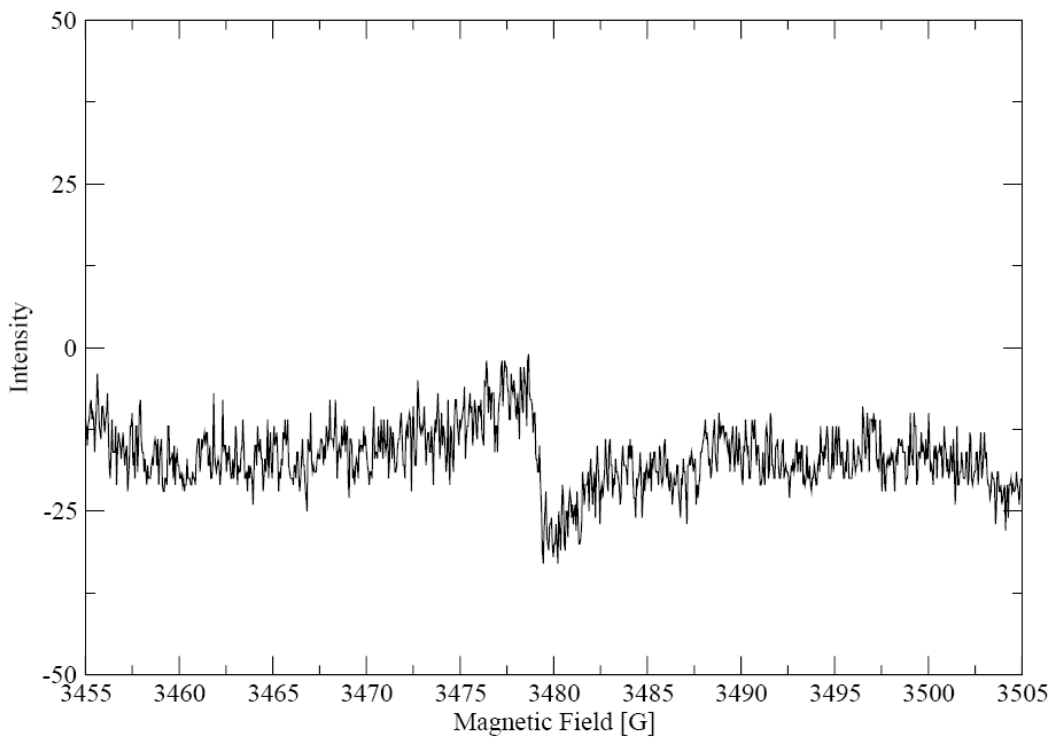


Image A.12 Weak Pitch, for Data see Tab. A.12

Microwave power:	1.008 mW	Integration time:	40.96 ms
Receiver gain:	40 dB	Conversion time:	81.92 ms
Field modulation:	1.00 G		

Tab A.12 Weak Pitch Data (23.dat)

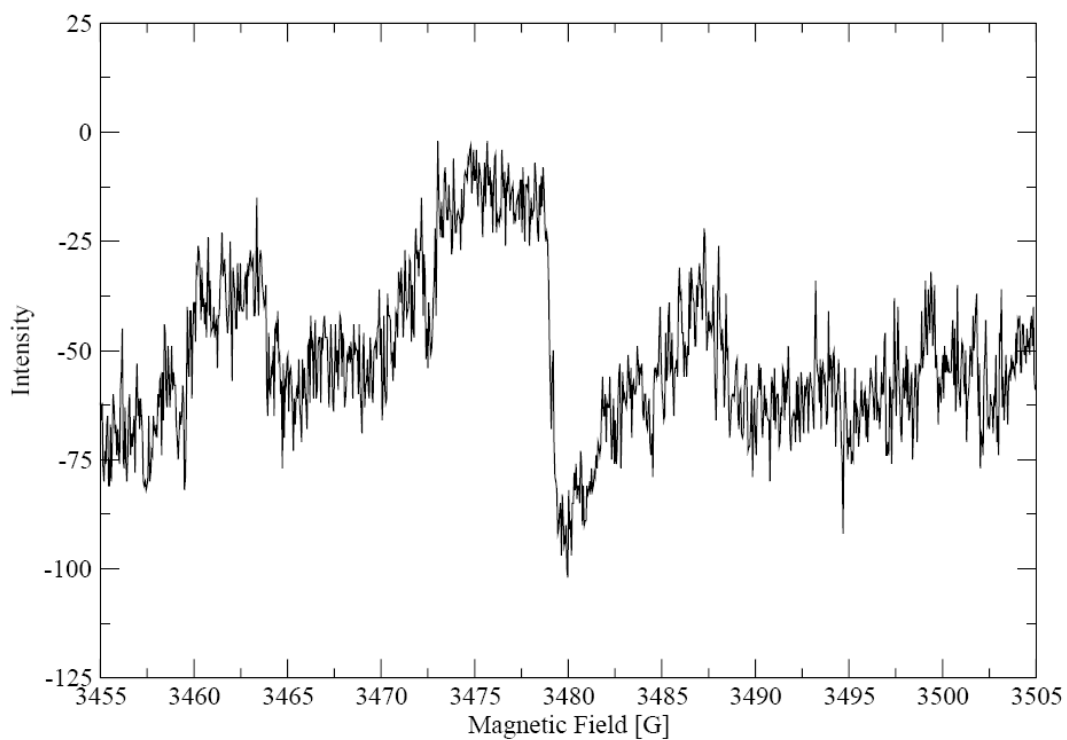


Image A.13 Weak Pitch, for Data see Tab. A.13

Microwave power:	1.008 mW	Integration time:	163.84 ms
Receiver gain:	40 dB	Conversion time:	327.68 ms
Field modulation:	1.00 G		

Tab A.13 Weak Pitch Data (24.dat)

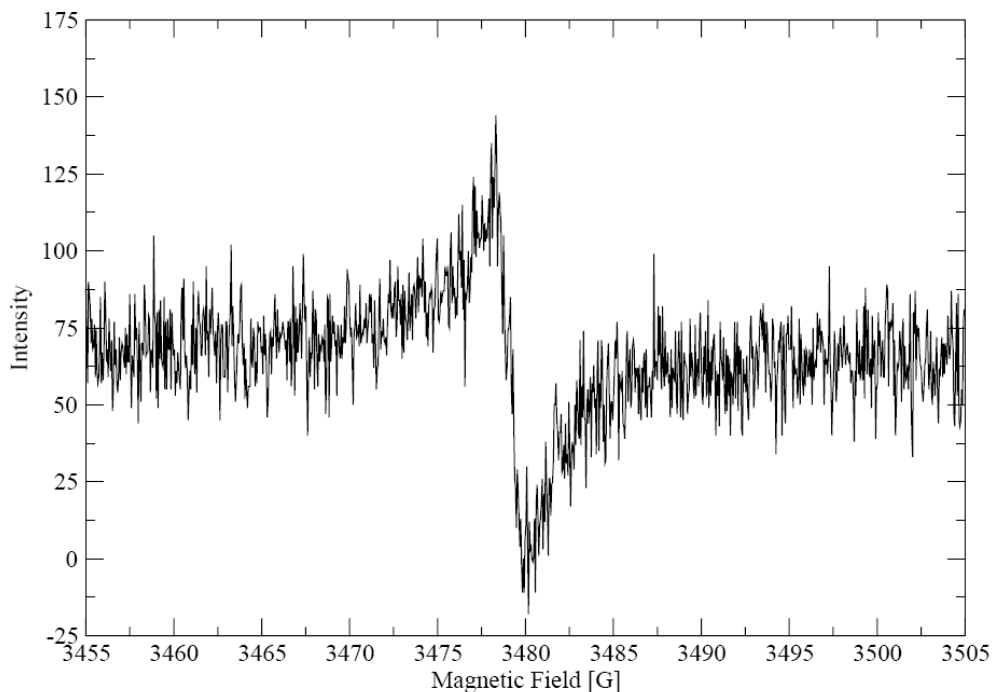


Image A.14 Weak Pitch, for Data see Tab. A.14

Microwave power:	1.008 mW	Integration time:	20.48 ms
Receiver gain:	50 dB	Conversion time:	81.92 ms
Field modulation:	2.00 G		

Tab A.14 Weak Pitch Data (25.dat)

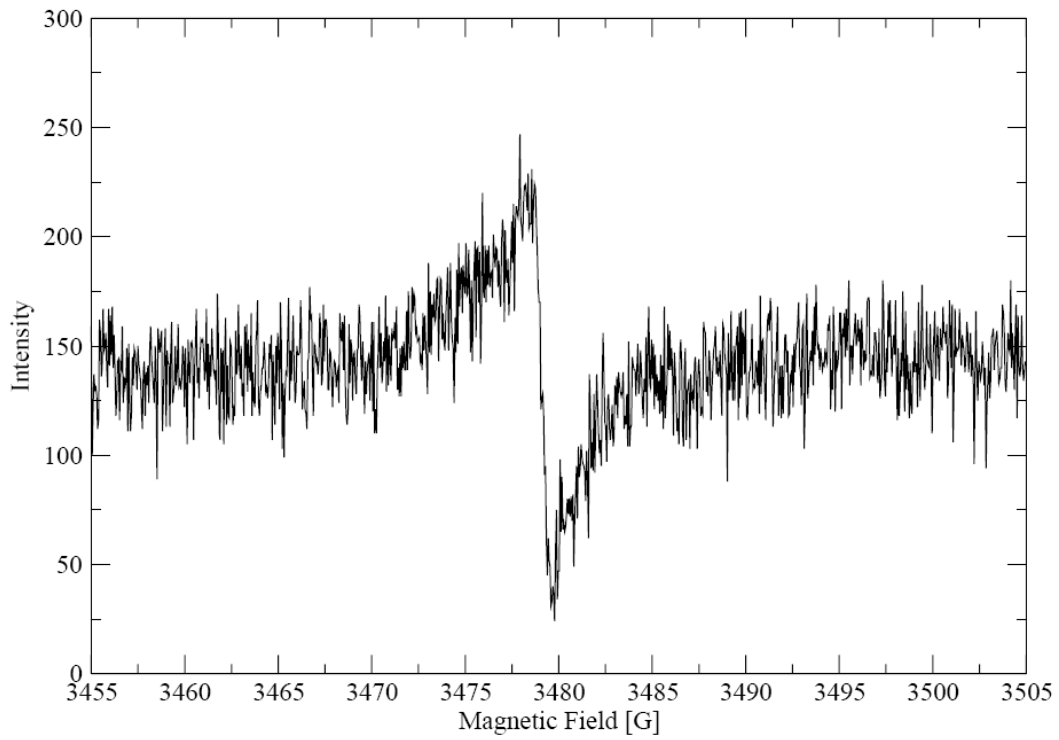


Image A.15 Weak Pitch, for Data see Tab. A.15

Microwave power:	2.012 mW	Integration time:	20.48 ms
Receiver gain:	50 dB	Conversion time:	163.84 ms
Field modulation:	1.00 G		

Tab A.15 Weak Pitch Data (26.dat)

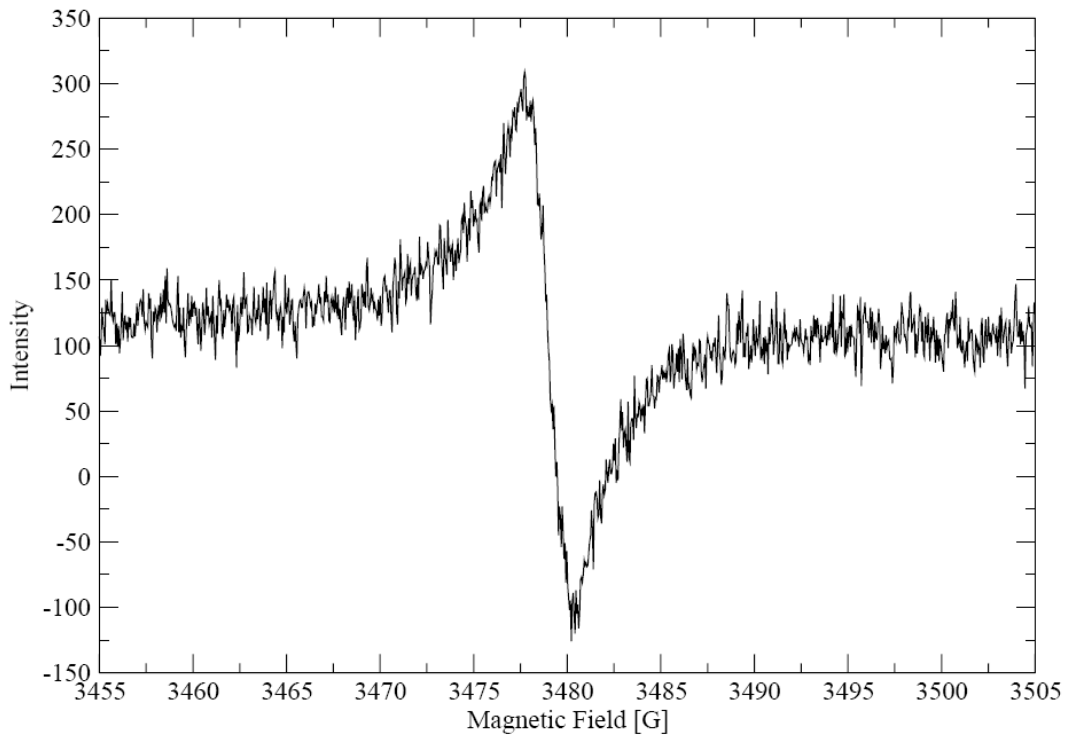


Image A.16 Weak Pitch, for Data see Tab. A.16

Microwave power:	2.012 mW	Integration time:	81.92 ms
Receiver gain:	50 dB	Conversion time:	163.84 ms
Field modulation:	3.00 G		

Tab A.16 Weak Pitch Data (27.dat)

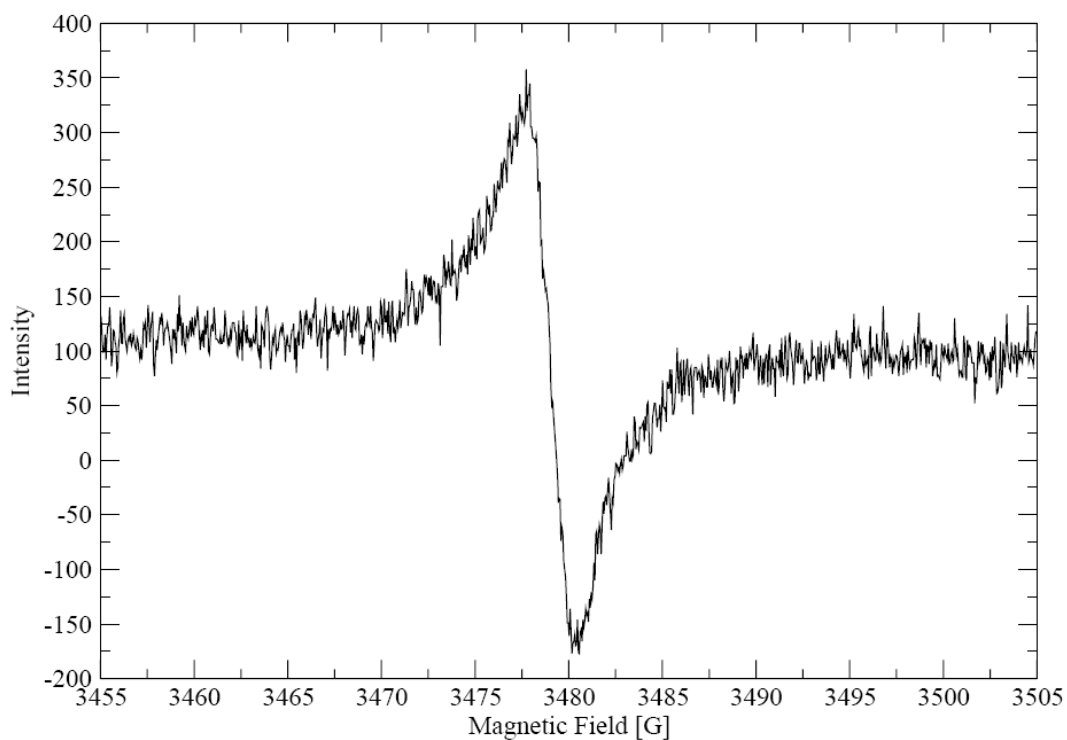


Image A.17 Weak Pitch, for Data see Tab. A.17

Microwave power:	3.188 mW	Integration time:	163.84 ms
Receiver gain:	50 dB	Conversion time:	81.92 ms
Field modulation:	3.00 G		

Tab A.17 Weak Pitch Data (28.dat)

A.3 DPPH

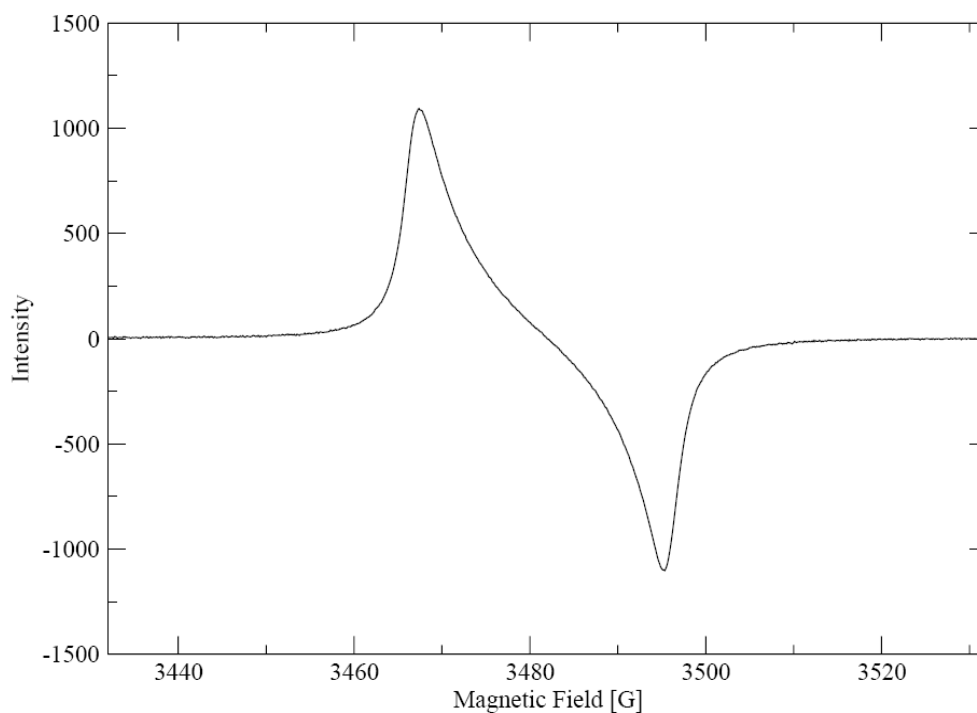


Image A.18 DPPH, for Data see Tab. A.18

Microwave power:	1.008 mW	Integration time:	10.24 ms
Receiver gain:	30 dB	Conversion time:	20.48 ms
Field modulation:	27.61 G		

Tab A.18 DPPH Data (40.dat)

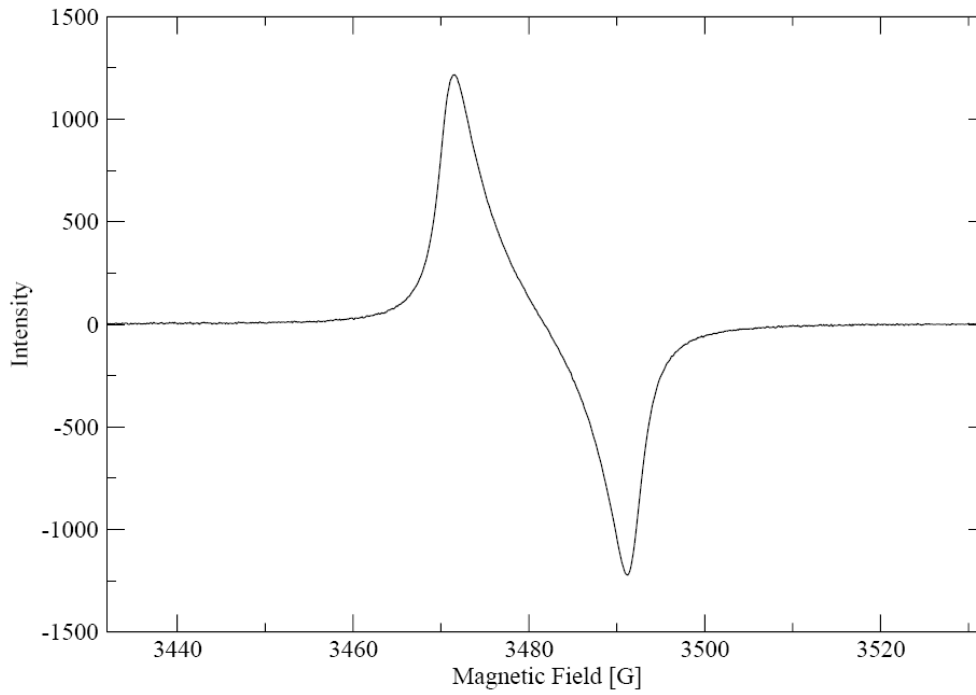


Image A.19 DPPH, for Data see Tab. A.19

Microwave power:	1.008 mW	Integration time:	10.24 ms
Receiver gain:	30 dB	Conversion time:	20.48 ms
Field modulation:	20.00 G		

Tab A.19 DPPH Data (41.dat)

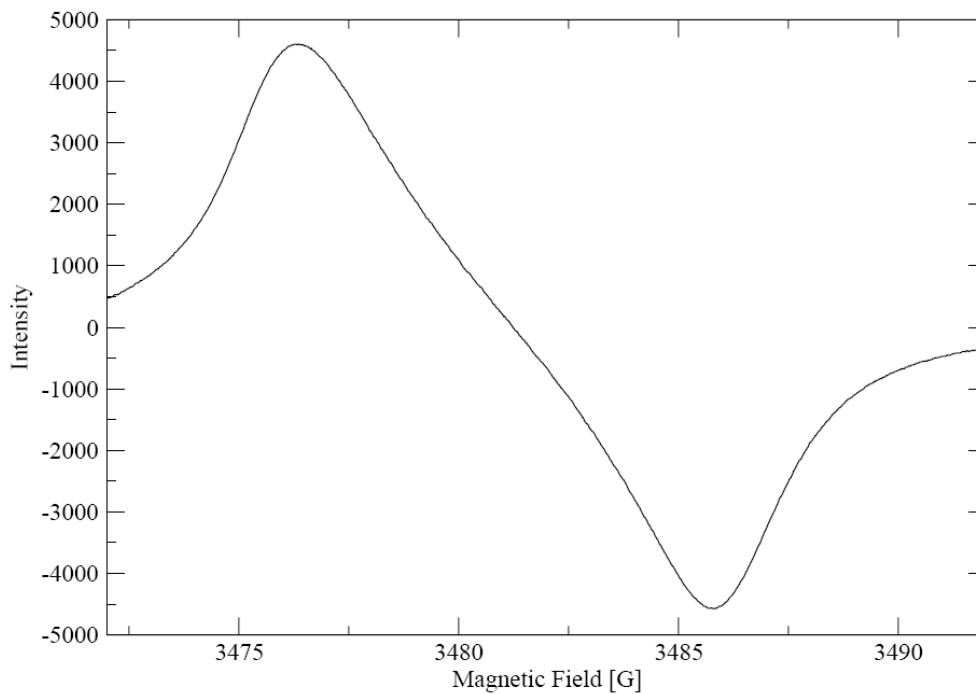


Image A.20 DPPH, for Data see Tab. A.20

Microwave power:	1.008 mW	Integration time:	10.24 ms
Receiver gain:	40 dB	Conversion time:	20.48 ms
Field modulation:	10.00 G		

Tab A.20 DPPH Data (42.dat)

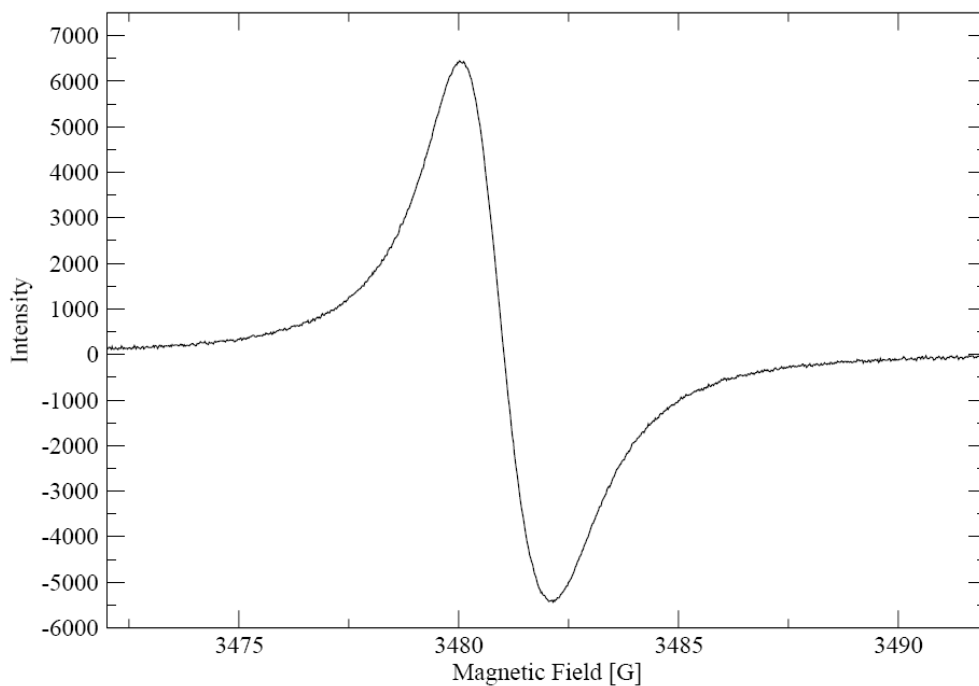


Image A.21 DPPH, for Data see Tab. A.21

Microwave power:	1.008 mW	Integration time:	10.24 ms
Receiver gain:	50 dB	Conversion time:	20.48 ms
Field modulation:	1.00 G		

Tab A.21 DPPH Data (43.dat)

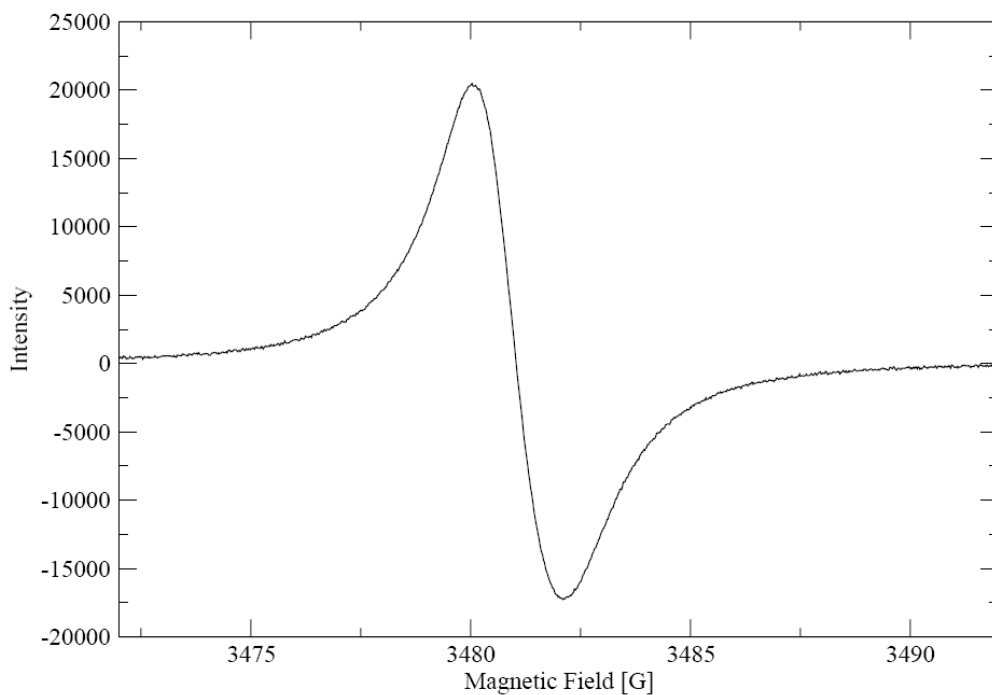


Image A.22 DPPH, for Data see Tab. A.22

Microwave power:	1.008 mW	Integration time:	10.24 ms
Receiver gain:	60 dB	Conversion time:	20.48 ms
Field modulation:	1.00 G		

Tab A.22 DPPH Data (44.dat)

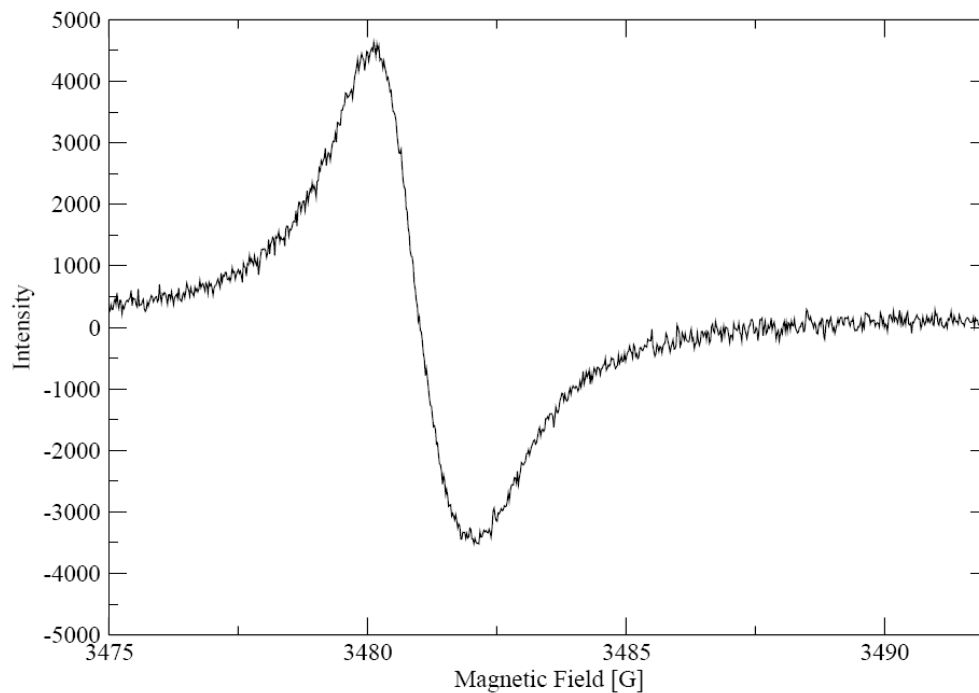


Image A.23 DPPH, for Data see Tab. A.23

Microwave power:	1.008 mW	Integration time:	20.48 ms
Receiver gain:	60 dB	Conversion time:	40.96 ms
Field modulation:	0.1 G		

Tab A.23 DPPH Data (45.dat)

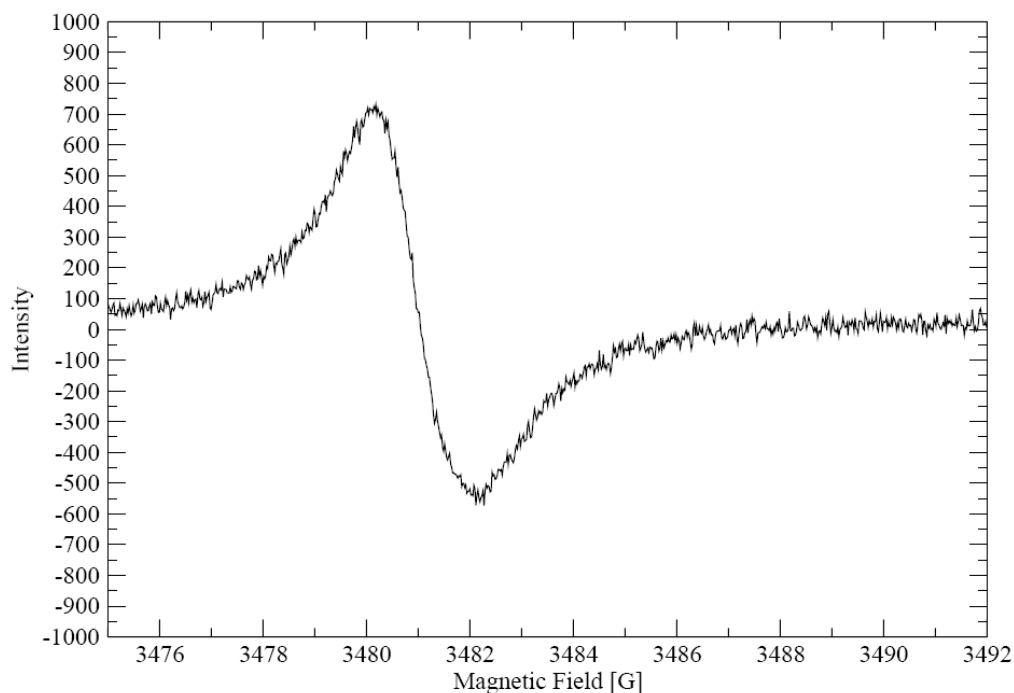


Image A.24 DPPH, for Data see Tab. A.24

Microwave power:	1.008 mW	Integration time:	10.24 ms
Receiver gain:	50 dB	Conversion time:	20.48 ms
Field modulation:	0.10 G		

Tab A.24 DPPH Data (46.dat)

A.4 γ -irradiates quartz glass

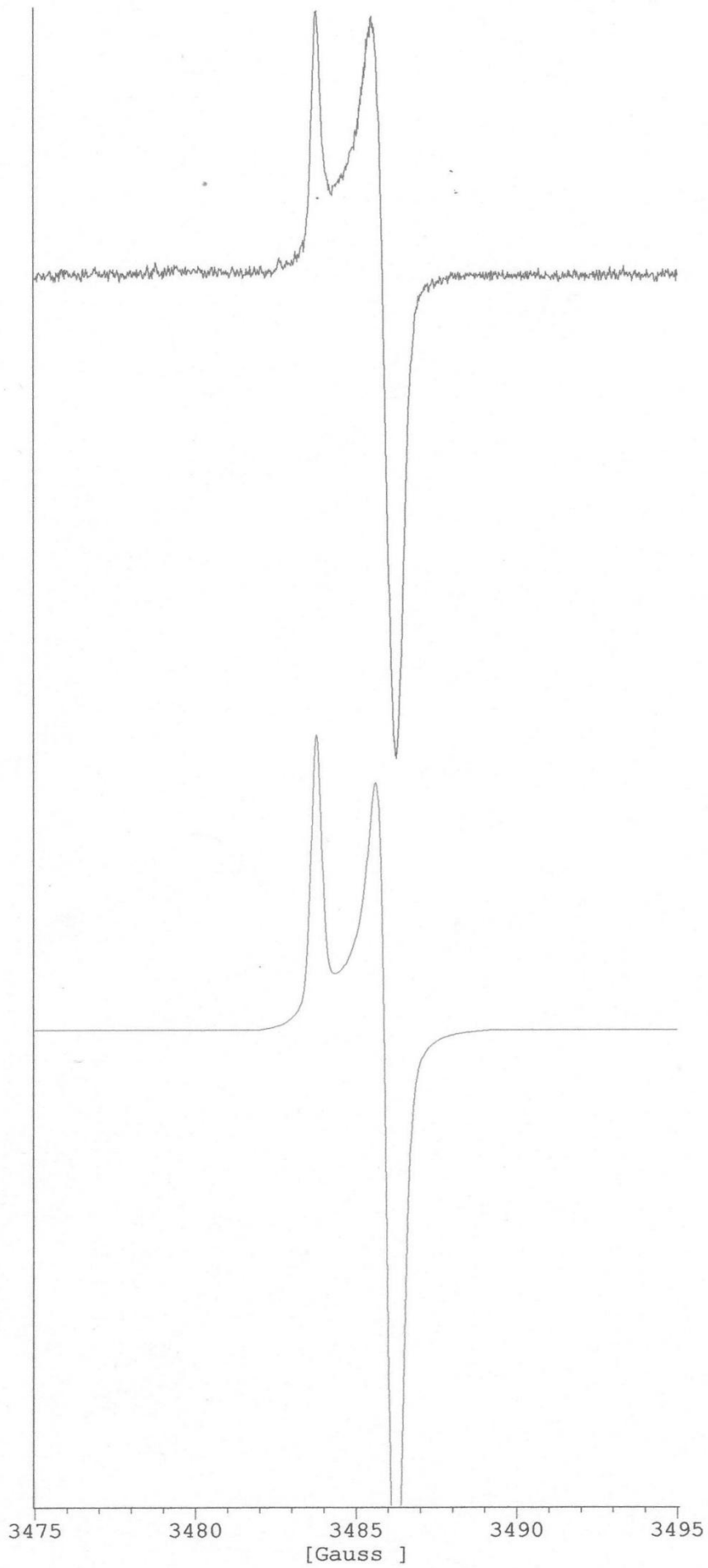


Image A.25 γ -irradiates quartz glass (upper part) and simulation

A.5 Phenalenyl radical

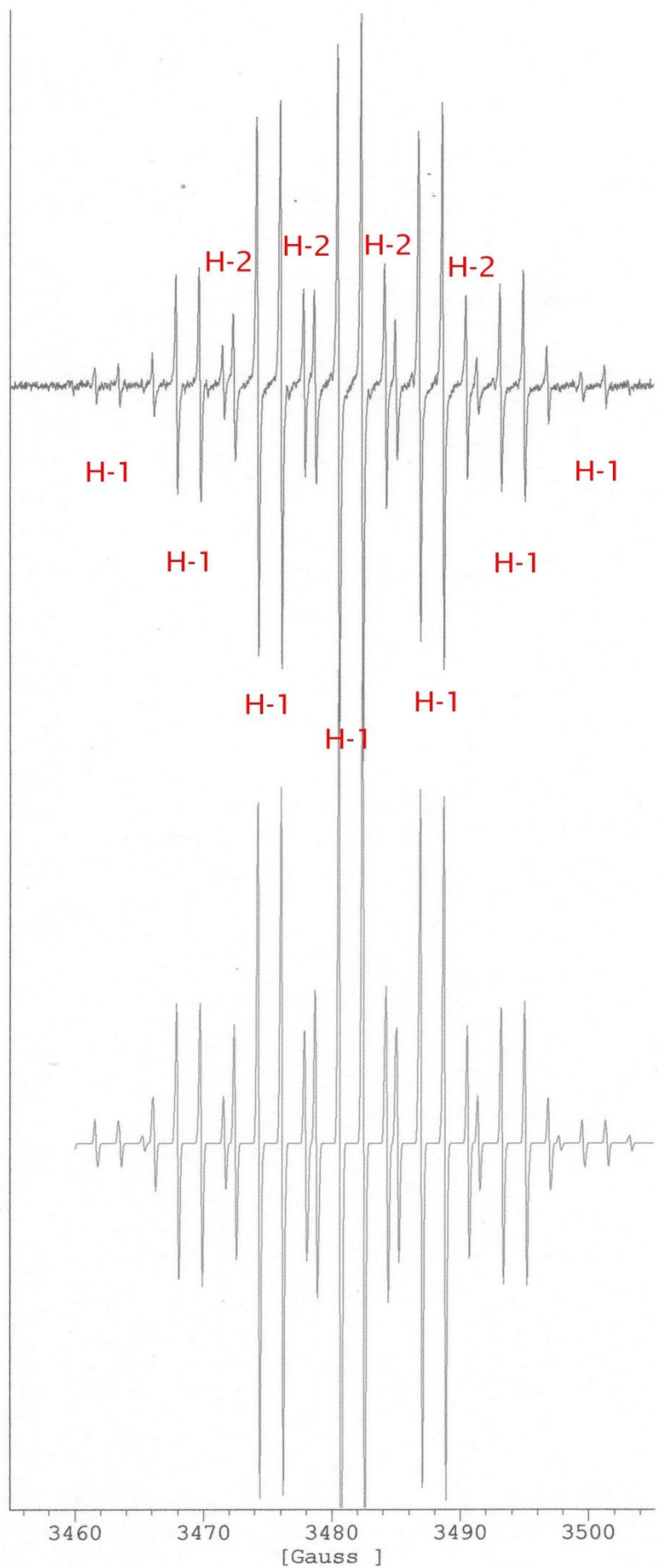


Image A.26 Phenalenyl radical (upper part) and simulation

A.6 $^{63}\text{Cu}(\text{sal})_2$ in $\text{Ni}(\text{sal})_2$

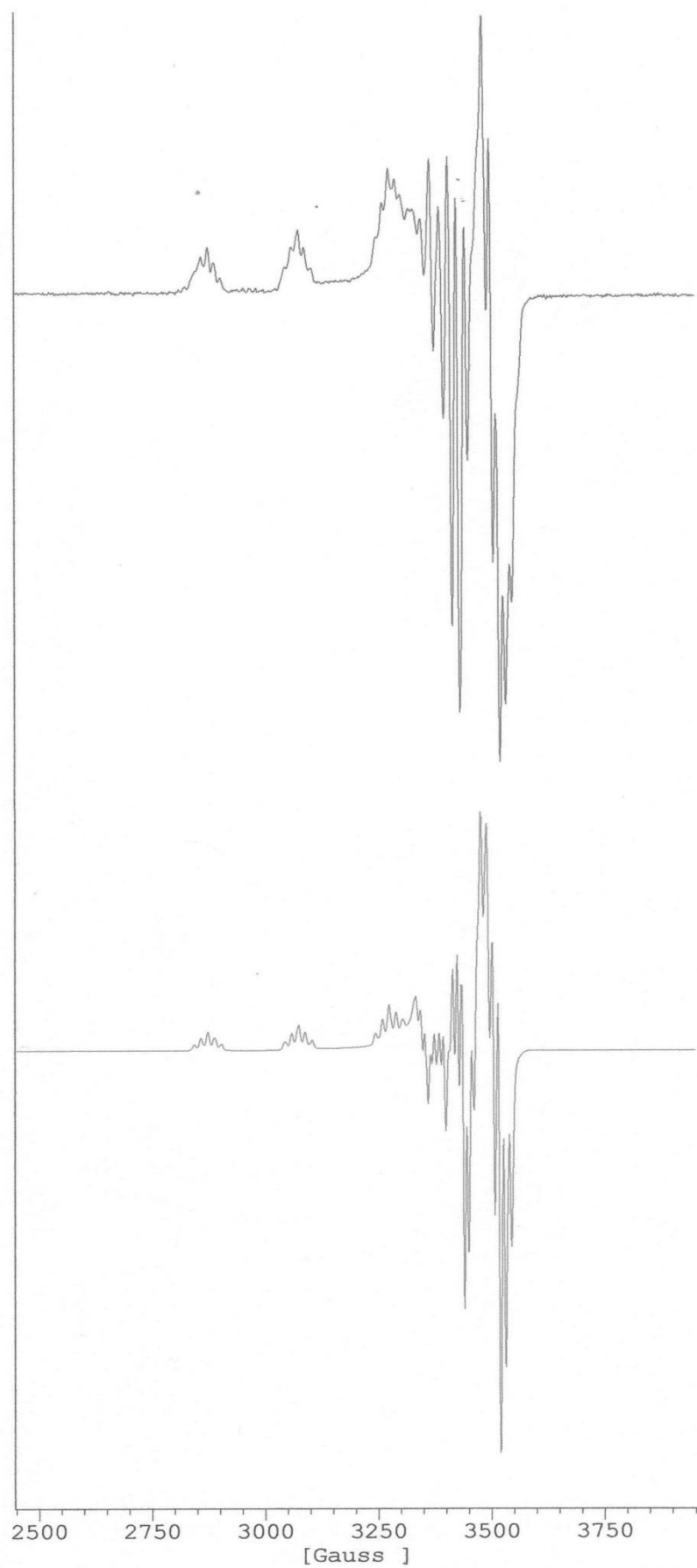


Image A.27 $^{63}\text{Cu}(\text{sal})_2$ in $\text{Ni}(\text{sal})_2$ (upper part) and simulation